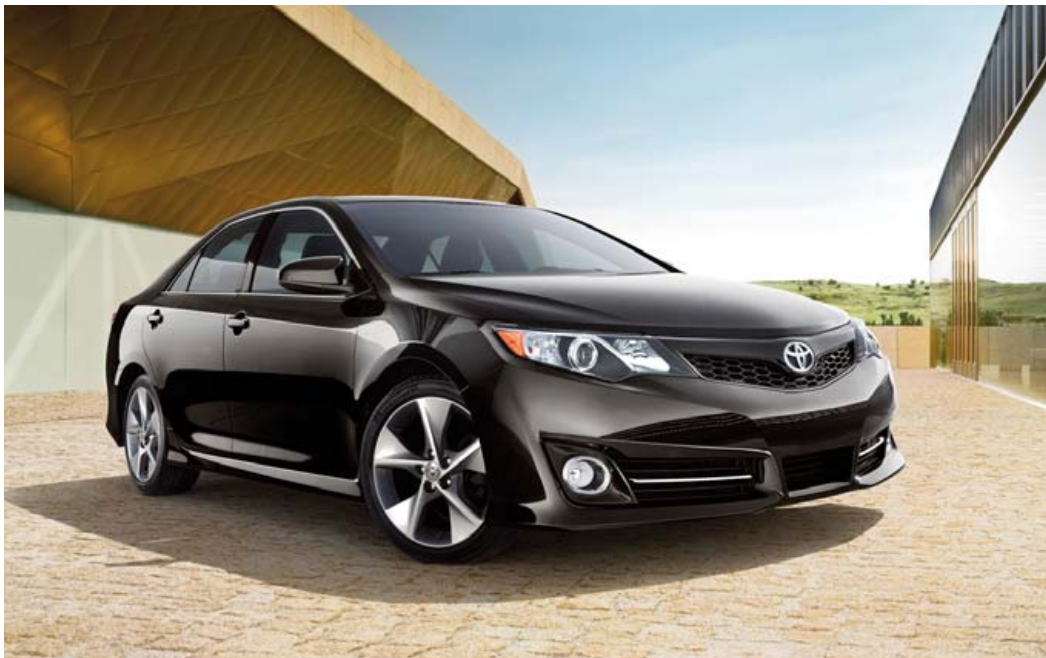


2012 Camry



SE shown in Attitude Black Metallic with available power tilt/slide moonroof and Leather Package.



SE interior shown in Black Sport fabric with available Display Audio with Navigation¹ and Entune.^{TM2}

Meet the reinvented 2012 Toyota Camry, the car designed to fit you and your 21st century lifestyle. Camry is more luxurious, with a redesigned interior. It's more advanced, with new available multimedia systems with Entune.TM And the Camry Hybrid LE now offers an estimated 43 city mpg.³ Quite simply, the 2012 Camry is more of what you've come to expect from this legendary sedan. The reinvented Camry is ready. Are you? **Moving Forward.**



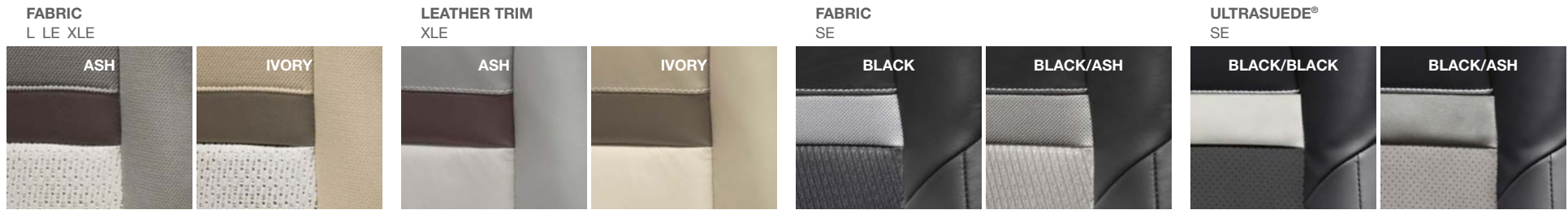
TOP STANDARD AND AVAILABLE FEATURES⁴

Standard ten airbags⁵ Available Smart Key System⁶ Available Blind Spot Monitor (BSM)⁷ 60/40 split fold-down rear seat Available Display Audio with six speakers and Entune.TM

1. See footnote 9 in Disclaimers section. 2. See footnote 10 in Disclaimers section. 3. See footnote 33 in Disclaimers section. 4. Features listed not available on all model grades. 5. See footnote 22 in Disclaimers section. 6. See footnote 16 in Disclaimers section. 7. See footnote 26 in Disclaimers section.

Combinations

FABRIC/LEATHER TRIM COLOR CHOICES



EXTERIOR/INTERIOR COLOR COMBINATIONS



ATTITUDE BLACK METALLIC



COSMIC GRAY MICA



BARCELONA RED METALLIC



MAGNETIC GRAY METALLIC



SUPER WHITE



CLASSIC SILVER METALLIC



SANDY BEACH METALLIC¹



CLEARWATER BLUE METALLIC¹



CYPRESS PEARL¹



WHEELS

- 1 L and LE 16-in. steel wheel with wheel cover
- 2 XLE 17-in. alloy wheel
- 3 SE 4-cyl. 17-in. alloy wheel
- 4 SE V6 18-in. alloy wheel

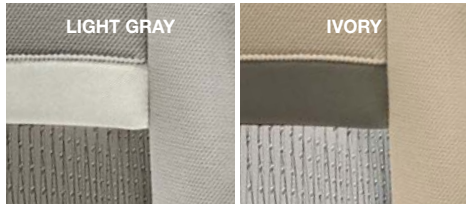


1. Not available on SE.

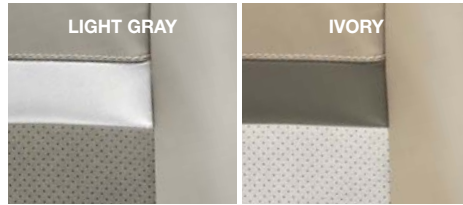
Hybrid Combinations

FABRIC/LEATHER TRIM COLOR CHOICES

FABRIC
HYBRID LE XLE



ULTRASUEDE®
HYBRID XLE



EXTERIOR/INTERIOR COLOR COMBINATIONS



ATTITUDE BLACK METALLIC



CLEARWATER BLUE METALLIC



CYPRESS PEARL



BARCELONA RED METALLIC



COSMIC GRAY MICA



MAGNETIC GRAY METALLIC



SUPER WHITE



SANDY BEACH METALLIC



CLASSIC SILVER METALLIC



WHEELS

- 1 Hybrid LE 16-in. steel wheel with wheel cover
- 2 Hybrid XLE 17-in. alloy wheel



Features¹

EXTERIOR	L	LE	SE	XLE	HYBRID LE	HYBRID XLE		L	LE	SE	XLE	HYBRID LE	HYBRID XLE
Projector-beam halogen headlamps	S	—	—	—	—	—	16-in. steel wheels with wheel covers and P205/65R16 tires	S	S	—	—	S	—
Projector-beam halogen headlamps with auto on/off feature	—	S	—	S	S	S	17-in. alloy wheels with P215/55R17 tires	—	—	S	S	—	S
Projector-beam halogen headlamps with black sport trim bezels and auto-on/off feature	—	—	S	—	—	—	18-in. alloy wheels with P225/45R18 tires (V6 only)	—	—	S	—	—	—
Integrated fog lamps	—	—	S	S	—	S	Washer-linked intermittent windshield wipers	S	S	S	S	S	S
Sport mesh front grille	—	—	S	—	—	—	Acoustic noise-reducing front windshield	—	—	S ³	S ³	S	S
Integrated front and rear underbody spoilers and sport side rocker panels	—	—	S	—	—	—	Color-keyed rear spoiler	—	—	S	—	—	—
Color-keyed power outside mirrors with folding feature	S	S	—	—	S	—	Chrome-tipped exhaust	—	—	S	S	—	S
Color-keyed heated power outside mirrors with folding feature	—	—	S	S	—	S	Dual chrome-tipped exhaust (V6 only)	—	—	S	S	—	—
Power tilt/slide moonroof with one-touch open/close with jam protection, driver and front-passenger illuminated vanity mirrors, and rear-seat reading lamps	—	O ²	O ²	S	—	O ²							
INTERIOR													
Air conditioning with air filter	S	S	S	—	—	—	Entune™ ¹⁰ — includes Bing™ iHeartRadio, MovieTickets.com, OpenTable® and Pandora® XM Data Services including NavTraffic™ ¹¹ NavWeather™ Fuel, and Sports & Stocks. Access to Entune™ ¹⁰ services is complimentary for three years. See toyota.com/entune for details.	—	—	—	O ^{2,3}	—	O ²
Dual zone automatic climate control with air filter and rear-seat vents	—	—	—	S	—	—	Backup camera ¹⁵	—	—	P ²	P ² /S ³	—	P ²
Dual zone automatic climate control with air filter, electric compressor and humidity sensor	—	—	—	—	S	—	Multi-function in-key remote keyless entry system with lock, two-stage unlock, panic, trunk-release functions and remote illuminated entry	—	S	S	S	—	—
Dual zone automatic climate control with air filter, electric compressor, humidity sensor and rear-seat vents	—	—	—	—	—	S	Smart Key System ¹⁶ on front doors and trunk with Push Button Start and remote illuminated entry	—	—	P ² /S ³	P ² /S ³	S	S
AM/FM CD player with MP3/WMA playback capability, six speakers, auxiliary audio jack, USB ⁴ port with iPod® ⁵ connectivity and control, auto sound leveling and BLU Logic® Hands Free System ⁶	S	—	—	—	S	—	Fabric-trimmed front seats with seatback pockets; 6-way adjustable driver's seat; 4-way adjustable front passenger seat	S	S	—	—	S	—
Display Audio — includes 6.1-in. touch-screen, AM/FM CD player with MP3/WMA playback capability, six speakers, auxiliary audio jack, USB ⁴ port with iPod® ⁵ connectivity and control, vehicle information with customizable settings, and hands-free phone capability, phone book access and music streaming via Bluetooth® ⁷ wireless technology	—	S	S ³	S ³	—	S	Fabric-trimmed front seats with seatback pockets; 8-way power-adjustable driver's seat with power lumbar support; 4-way adjustable front passenger seat	—	O ²	—	S ³	—	S
Display Audio with Navigation ⁹ and Entune™ ¹⁰ — includes 6.1-in. touch-screen, AM/FM CD player with MP3/WMA playback capability, six speakers, SiriusXM Satellite Radio ¹¹ capability (includes three-month trial subscription to XM Select Package), HD Radio™ ¹² with iTunes® Tagging, ¹³ auxiliary audio jack, USB ⁴ port with iPod® ⁵ connectivity and control, vehicle information with customizable settings, and hands-free phone capability, phone book access, advanced voice recognition, text-to-speech ¹⁴ with programmed and customizable text responses, and music streaming via Bluetooth® ⁷ wireless technology	—	—	O ² /S ³	O ² /S ³	—	O ²	Leather-trimmed multi-stage heated front seats with seatback pockets; 8-way power-adjustable driver's seat with power lumbar support; 4-way power-adjustable front passenger seat	—	—	—	P ² /S ³	—	—
Display Audio with Navigation ⁹ , Entune™ ¹⁰ and JBL® — includes 6.1-in. touch-screen, AM/FM CD player with MP3/WMA playback capability, ten JBL® GreenEdge™ speakers including subwoofer and amplifier, SiriusXM Satellite Radio ¹¹ capability (includes three-month trial subscription to XM Select Package), HD Radio™ ¹² with iTunes® Tagging, ¹³ auxiliary audio jack, USB ⁴ port with iPod® ⁵ connectivity and control, vehicle information with customizable settings, and hands-free phone capability, phone book access, advanced voice recognition, text-to-speech ¹⁴ with programmed and customizable text responses, and music streaming via Bluetooth® ⁷ wireless technology	—	—	O ² /S ³	O ² /S ³	—	O ²	Leather-trimmed Ultrasuede® multi-stage heated front seats with seatback pockets; 8-way power-adjustable driver's seat with power lumbar support; 4-way power-adjustable front passenger seat	—	—	—	—	—	P ²
Premium HDD Navigation ⁹ with Entune™ ¹⁰ and JBL® — includes 7-in. touch-screen with split-screen capability, AM/FM CD player with MP3/WMA playback capability, ten JBL® GreenEdge™ speakers including subwoofer and amplifier, SiriusXM Satellite Radio ¹¹ capability (includes three-month trial subscription to XM Select Package), HD Radio™ ¹² with iTunes® Tagging, ¹³ auxiliary audio jack, USB ⁴ port with iPod® ⁵ connectivity and control, vehicle information with customizable settings, and hands-free phone capability, phone book access, advanced voice recognition, text-to-speech ¹⁴ with programmed and customizable text responses, and music streaming via Bluetooth® ⁷ wireless technology	—	—	—	O ^{2,3}	O ²	—	Sport fabric SofTex-trimmed front seats with seatback pockets; 6-way adjustable driver's seat; 4-way adjustable front passenger seat	—	—	S	—	—	—
Entune™ ¹⁰ — includes Bing™ and Pandora®; real-time info including traffic, weather, fuel prices, sports and stocks. Apps available spring 2012 at no charge include iHeartRadio, MovieTickets.com and OpenTable®. Access to Entune™ ¹⁰ services is complimentary for three years. See toyota.com/entune for details.	—	—	O ² /S ³	O ² /S ³	—	O ²	Sport fabric SofTex-trimmed front seats with seatback pockets; 8-way power-adjustable driver's seat with power lumbar support; 4-way adjustable front passenger seat	—	—	O ² /S ³	—	—	—
	—	—	—	—	—	—	Sport leather-trimmed Ultrasuede® multi-stage heated front seats with seatback pockets; 8-way power-adjustable driver's seat with power lumbar support; 4-way power-adjustable front passenger seat	—	—	P ²	—	—	—
	—	—	—	—	—	—	60/40 split fold-down rear seat with center armrest with cup holders	S	S	S	S	—	—
	—	—	—	—	—	—	Fold-down rear seat with center armrest with cup holders and pass-through	—	—	—	—	S	S
	—	—	—	—	—	—	Cruise control	S	S	S	S	S	S
	—	—	—	—	—	—	Tilt/telescopic 4-spoke steering wheel with audio controls	—	S	—	—	—	—
	—	—	—	—	—	—	Leather-trimmed tilt/telescopic 4-spoke steering wheel with Bluetooth® ⁷ hands-free phone and voice-command controls	—	—	—	S	—	S
	—	—	—	—	—	—	Leather-trimmed tilt/telescopic sport steering wheel with paddle shifters, and Bluetooth® ⁷ hands-free phone and voice-command controls	—	—	S	—	—	—
	—	—	—	—	—	—	Analog instrumentation with speedometer, tachometer, fuel and average fuel economy gauges; LCD display with odometer and tripmeters; shift-position indicator and scheduled maintenance indicator	S	—	—	—	—	—
	—	—	—	—	—	—	Analog instrumentation with speedometer, tachometer, fuel and average fuel economy gauges; LCD display with odometer, tripmeters, outside temperature, shift-position indicator and scheduled maintenance indicator	—	S	S	—	—	—

See numbered footnotes in Disclaimers section.

Features¹

INTERIOR (continued)

	L	LE	SE	XLE	HYBRID LE	HYBRID XLE
Optitron instrumentation with speedometer, hybrid system power meter, fuel and average fuel economy gauges; LCD Multi-Information Display with odometer, tripmeters, outside temperature, fuel economy history, instant/average fuel economy, distance to empty and average speed; shift-position indicator, scheduled maintenance indicator, EV ¹⁷ and ECO mode indicators, ECO Driving Indicator and warning messages	—	—	—	—	S	S
Analog instrumentation with speedometer, tachometer, fuel and average fuel economy gauges; LCD display with odometer, tripmeters, outside temperature, fuel economy history, average fuel economy and distance to empty; shift-position and scheduled maintenance indicator	—	—	—	S	—	—
Silver interior trim with silver interior door handles	—	—	S	—	—	—
Wood-grain-style interior trim with chrome interior door handles	—	—	—	S	—	—
Metallic-tech-grain interior trim with chrome interior door handles	—	—	—	—	S	S
Power door locks with shift-linked automatic locking feature with anti-lockout feature	—	S	S	S	S	S
Power windows with driver-side auto up/down, jam protection in all positions and retained-power features	S	S	S	S	S	S

SAFETY AND CONVENIENCE

STAR SAFETY SYSTEM ™ Star Safety System™ — includes Enhanced Vehicle Stability Control (VSC), ¹⁹ Traction Control (TRAC), 4-wheel Anti-lock Brake System (ABS), Electronic Brake-force Distribution (EBD), Brake Assist (BA) ²⁰ and Smart Stop Technology (SST) ²¹	S	S	S	S	S	S
Ten airbags ²² — includes driver and front passenger Advanced Airbag System, driver and front passenger seat-mounted side airbags, driver and front passenger knee airbags, rear seat-mounted side airbags, and front and rear side curtain airbags	S	S	S	S	S	S
Driver and front passenger Whiplash-Injury-Lessening (WIL) ²³ seats	S	S	S	S	S	S
3-point seatbelts for all seating positions; driver-side Emergency Locking Retractor (ELR) and Automatic/Emergency Locking Retractor (ALR/ELR) on all passenger seat belts	S	S	S	S	S	S
LATCH (Lower Anchors and Tethers for CHildren) includes lower anchors on outboard rear seats and tether anchors on all rear seats	S	S	S	S	S	S
Child-protector rear door locks and power window lockout control	S	S	S	S	S	S
Energy-absorbing collapsible steering column	S	S	S	S	S	S

	L	LE	SE	XLE	HYBRID LE	HYBRID XLE
Rear window defogger with timer	S	S	S	S	S	S
Day/night rearview mirror	S	S	S	S	S	—
Auto-dimming rearview mirror with compass	—	—	P ²	P ² /S ³	—	S
Overhead console with maplamps and sunglasses storage	S	S	S	S	S	S
HomeLink ^{®18} universal transceiver	—	—	P ²	P ² /S ³	—	P ²
Covered center console with sliding cover, armrest and storage	S	S	S	S	S	S
Illuminated glove compartment	S	S	S	S	S	S
One 12V auxiliary power outlet	S	—	—	—	S	—
Two 12V auxiliary power outlets	—	S	S	S	—	S
Dual sun visors with sliding extensions	S	S	S	S	S	S
Two front and two rear cup holders; two front door and four rear bottle holders	S	S	S	S	S	S

Front and rear energy-absorbing crumple zones	S	S	S	S	S	S
Side-impact door beams	S	S	S	S	S	S
Tire Pressure Monitor System (TPMS) ²⁴	S	S	S	S	S	S
Collision sensors: deactivate high-voltage battery	—	—	—	—	S	S
Daytime Running Lights (DRL) with on/off feature	S	S	S	S	S	S
Safety Connect ^{®25} — includes Emergency Assistance, Stolen Vehicle Locator, Roadside Assistance and Automatic Collision Notification. Available by subscription. Complimentary one-year trial subscription.	—	—	—	O ²	—	O ²
Blind Spot Monitor (BSM) ²⁶	—	—	—	O ²	—	O ²
Battery-saver feature: deactivates interior lamps after 20 minutes	S	S	S	S	S	S
Engine immobilizer ²⁷	S	S	S	S	S	S
Anti-theft system with alarm	—	—	P ²	P ² /S ³	—	P ²

S = Standard **O = Optional** **— = Not Available** **P = Feature is available as part of an option package.**

Specifications

MECHANICAL AND PERFORMANCE	L 4-CYLINDER	LE 4-CYLINDER	SE 4-CYLINDER	SE V6	XLE 4-CYLINDER	XLE V6
Engine	2.5-Liter 4-Cylinder DOHC 16-Valve Dual VVT-i; 178 hp @ 6000 rpm; ²⁸ 170 lb.-ft. @ 4100 rpm	2.5-Liter 4-Cylinder DOHC 16-Valve Dual VVT-i; 178 hp @ 6000 rpm; ²⁸ 170 lb.-ft. @ 4100 rpm	2.5-Liter 4-Cylinder DOHC 16-Valve Dual VVT-i; 178 hp @ 6000 rpm; ²⁸ 170 lb.-ft. @ 4100 rpm	3.5-Liter V6 DOHC 24-Valve Dual VVT-i; 268 hp @ 6200 rpm 248 lb.-ft. @ 4700 rpm	2.5-Liter 4-Cylinder DOHC 16-Valve Dual VVT-i; 178 hp @ 6000 rpm; 170 lb.-ft. @ 4100 rpm	3.5-Liter V6 DOHC 24-Valve Dual VVT-i; 268 hp @ 6200 rpm 248 lb.-ft. @ 4700 rpm
IGNITION SYSTEM						
Electronic, with Toyota Direct Ignition (TDI)	Standard	Standard	Standard	Standard	Standard	Standard
EMISSION RATING						
Ultra Low Emission Vehicle II (ULEV-II)	Standard	Standard	Standard	Standard	Standard	Standard
TRANSMISSION						
6-speed Electronically Controlled automatic Transmission with intelligence (ECT-i) and sequential shift mode (SE model adds paddle shifters)						
DRIVETRAIN						
Front-Wheel Drive	Standard	Standard	Standard	Standard	Standard	Standard
BODY CONSTRUCTION						
Unitized body with front and rear anti-vibration sub-frames	Standard	Standard	Standard	Standard	Standard	Standard
SUSPENSION						
MacPherson strut front suspension with gas-filled shock absorbers and stabilizer bar; dual-link independent MacPherson strut rear suspension with gas-filled shock absorbers and stabilizer bar (SE model adds sport-tuned shock absorbers, springs and solid stabilizer bar)						
STEERING						
Electric Power Steering (EPS); power-assisted rack-and-pinion	Standard	Standard	Standard	Standard	Standard	Standard
Turning circle diameter, curb to curb (ft.)	36.7	36.7	36.7	36.7	36.7	36.7
BRAKES						
Power-assisted ventilated 11.65-in. front disc brakes; solid 11-in. rear disc brakes with hydraulic brake booster, Electronically Controlled Braking (ECB) system and Star Safety System™						
EXTERIOR DIMENSIONS (in.)						
Overall height	57.9	57.9	57.9	57.9	57.9	57.9
Overall width	71.7	71.7	71.7	71.7	71.7	71.7
Overall length	189.2	189.2	189.2	189.2	189.2	189.2
Wheelbase	109.3	109.3	109.3	109.3	109.3	109.3
Ground clearance	6.1	6.1	6.1	6.1	6.1	6.1
Track (front/rear)	62.4/62.0	62.4/62.0	62.0/61.6	62.0/61.6	62.0/61.6	62.0/61.6
Coefficient of drag (Cd)	0.28	0.28	0.28	0.28	0.28	0.28
INTERIOR DIMENSIONS (front/rear) (in.)						
Head room						
without moonroof	38.8/38.1	38.8/38.1	38.8/38.1	38.8/38.1	38.8/38.1	38.8/38.1
with moonroof	NA	37.9/38.0	37.9/38.0	37.9/38.0	37.9/38.0	37.9/38.0
Shoulder room	58.0/56.6	58.0/56.6	58.0/56.6	58.0/56.6	58.0/56.6	58.0/56.6
Hip room	54.5/54.5	54.5/54.5	54.5/54.5	54.5/54.5	54.5/54.5	54.5/54.5
Leg room	41.6/38.9	41.6/38.9	41.6/38.9	41.6/38.9	41.6/38.9	41.6/38.9
WEIGHTS AND CAPACITIES						
Curb weight (lb.)	3190	3190	3240	3420	3245	3395
EPA passenger volume (cu. ft.)						
without moonroof	102.7	102.7	102.7	102.7	102.7	102.7
with moonroof	NA	101.3	101.3	101.3	101.3	101.3
Cargo volume ²⁹ rear seatbacks up (cu. ft.)	15.4	15.4	15.4	15.4	15.4	15.4
Fuel tank (gal.)	17.0	17.0	17.0	17.0	17.0	17.0
Seating capacity	5	5	5	5	5	5
TIRES						
Type						
All-Season	Standard	Standard	Standard	Standard	Standard	Standard
Spare						
Temporary	Standard	Standard	Standard	Standard	Standard	Standard
MILEAGE ESTIMATES (mpg city/highway/combined)³⁰						
	25/35/28	25/35/28	25/35/28	21/30/25	25/35/28	21/30/25

See numbered footnotes in Disclaimers section.

Hybrid Specifications

MECHANICAL AND PERFORMANCE

Engine

HYBRID LE

Hybrid engine: 2.5-Liter 4-Cylinder Dual DOHC
16-Valve VVT-i, EV¹⁷ and ECO modes;
200 hybrid system net hp (149 kW)

HYBRID XLE

Hybrid engine: 2.5-Liter 4-Cylinder DOHC
16-Valve Dual VVT-i, EV¹⁷ and ECO modes;
200 hybrid system net hp (149 kW)

IGNITION SYSTEM

Electronic, with Toyota Direct Ignition (TDI)

Standard

Standard

EMISSION RATING

Advanced Technology Partial Zero Emission Vehicle (AT-PZEV)³¹

Standard

Standard

ELECTRIC MOTOR

Motor Type

Permanent magnet AC synchronous motor

Voltage

650V maximum

TRACTION BATTERY

Type

Sealed Nickel-Metal Hydride (Ni-MH)³²

Voltage

244.8V maximum

TRANSMISSION

Electronically controlled Continuously Variable Transmission (ECVT)

Standard

Standard

DRIVETRAIN

Front-Wheel Drive

Standard

Standard

BODY CONSTRUCTION

Unitized body with front and rear anti-vibration sub-frames

Standard

Standard

SUSPENSION

MacPherson strut front suspension with gas-filled shock absorbers and stabilizer bar; dual-link independent MacPherson strut rear suspension with gas-filled shock absorbers and stabilizer bar

STEERING

Electric Power Steering (EPS); power-assisted rack-and-pinion

Standard

Standard

Turning circle diameter, curb to curb (ft.)

36.7

36.7

BRAKES

Power-assisted ventilated 11.65-in. front disc brakes; solid 11-in. rear disc brakes with hydraulic brake booster, Electronically Controlled Braking (ECB) system, integrated regenerative braking and Star Safety System™

EXTERIOR DIMENSIONS (in.)

Overall height, unloaded

57.9

57.9

Overall width

71.7

71.7

Overall length

189.2

189.2

Wheelbase

109.3

109.3

Ground clearance

6.1

6.1

Track (front/rear)

62.4/62.0

62.0/61.6

Coefficient of drag (Cd)

0.27

0.27

INTERIOR DIMENSIONS (front/rear) (in.)

Head room

without moonroof

38.8/38.1

38.8/38.1

with moonroof

NA

37.9/38.0

Shoulder room

58.0/56.6

58.0/56.6

Hip room

54.5/54.5

54.5/54.5

Leg room

41.6/38.9

41.6/38.9

EXTERIOR DIMENSIONS (in.)

Curb weight (lb.)

3435

3525

EPA passenger volume (cu. ft.)

without moonroof/with moonroof

102.7/NA

102.7/101.3

Cargo volume²⁹ rear seatbacks up (cu. ft.)

13.1

13.1

Fuel tank (gal.)

17.0

17.0

Seating capacity

5

5

TIRES

Type; All-Season

Standard

Standard

Spare; Temporary

Standard

Standard

MILEAGE ESTIMATES (mpg city/highway/combined)

43/39/41³³

40/38/40³⁰

See numbered footnotes in Disclaimers section.

PACKAGES AND OPTIONS

L

No options

LE

- 8-way power-adjustable driver's seat
- Power tilt/slide moonroof
(Requires 8-way power-adjustable driver's seat)

SE 4-cyl.

- 8-way power-adjustable driver's seat
- Power tilt/slide moonroof
(Requires 8-way power-adjustable driver's seat)
- Display Audio with Navigation⁹ and Entune™¹⁰
(Requires 8-way power-adjustable driver's seat)
- Convenience Package includes
 - Backup camera¹⁵
 - Auto-dimming rearview mirror with compass
 - HomeLink®¹⁸ universal transceiver
 - Anti-theft system with alarm
 - Smart Key System¹⁶ with Push Button Start
(Requires power tilt/slide moonroof, and Display Audio with Navigation⁹ and Entune™¹⁰)
- Leather Package
(Requires Convenience Package)

SE V6

- Power tilt/slide moonroof
- Convenience Package includes
 - Backup camera¹⁵
 - Auto-dimming rearview mirror with compass
 - HomeLink®¹⁸ universal transceiver
 - Anti-theft system with alarm
(Requires power tilt/slide moonroof)
- Leather Package
(Requires Convenience Package)
- Display Audio with Navigation⁹, Entune™¹⁰ and JBL®
(Requires Leather Package)

XLE 4-cyl.

- Display Audio with Navigation⁹ and Entune™¹⁰
- Convenience Package includes
 - Backup camera¹⁵
 - Auto-dimming rearview mirror with compass
 - HomeLink®¹⁸ universal transceiver
 - Anti-theft system with alarm
 - Smart Key System¹⁶ with Push Button Start
- Leather Package
(Requires Convenience Package)
- Display Audio with Navigation⁹, Entune™¹⁰ and JBL® and Blind Spot Monitor (BSM)²⁶ and Safety Connect®²⁵
(Requires Leather Package)

XLE V6

- Display Audio with Navigation⁹, Entune™¹⁰ and JBL®, and Blind Spot Monitor (BSM)²⁶ and Safety Connect®²⁵
- Premium HDD Navigation⁹, Entune™¹⁰ and JBL®, and Blind Spot Monitor (BSM)²⁶ and Safety Connect®²⁵

Hybrid LE

No options

Hybrid XLE

- Convenience Package includes
 - Backup camera¹⁵
 - HomeLink®¹⁸ universal transceiver
 - Anti-theft system with alarm
- Display Audio with Navigation⁹ and Entune™¹⁰
- Power tilt/slide moonroof
(Requires Convenience Package, and Display Audio with Navigation⁹ and Entune™¹⁰)
- Leather Package
(Requires power tilt/slide moonroof)
- Display Audio with Navigation⁹, Entune™¹⁰ and JBL®, and Blind Spot Monitor (BSM)²⁶ and Safety Connect®²⁵
(Requires Leather Package)
- Premium HDD Navigation, Entune™¹⁰ and JBL®, and Blind Spot Monitor (BSM)²⁶ and Safety Connect®²⁵
(Requires Leather Package)

TOYOTA FINANCIAL SERVICES



Toyota Rewards Visa®

Toyota helps you get more out of every dollar you spend. By rewarding you for every purchase you make, the Toyota Rewards Visa® adds even more value to doing the things you love. Turn everything you buy into points to redeem toward parts, accessories or an eligible vehicle purchase or lease at your Toyota dealer. Earn 5 points for every \$1 spent at participating Toyota dealers and 1 point for every \$1 spent everywhere else Visa is accepted.*

Visit www.toyotarewardsvisa.com for complete details.

Toyota Financial Services (TFS)[†] is a leading provider of automotive financial services, offering an extensive line of financing plans along with a variety of vehicle and payment protection products to Toyota customers and dealers in the U.S. For more information on TFS products and services, visit www.toyotafinancial.com

*On approved credit. You must have a valid permanent home address in the 50 United States or the District of Columbia. Terms, conditions and restrictions apply and are fully described in the Toyota Rewards Visa Cardmember Agreement and the Toyota Rewards Program Terms and Conditions received with your card. Points earned are based on net purchases. Points-earning maximums apply and points will expire as described in the Rewards Terms and Conditions. Redemption only available at participating Toyota dealerships in the continental U.S. and Alaska. Points cannot be redeemed for cash. Please contact your participating Toyota dealer for information regarding restrictions your dealer may impose on the use of credit cards related to vehicle purchases or leases. The creditor and issuer of the Toyota Rewards Visa is Toyota Financial Savings Bank. Toyota Financial Services is a service mark used by Toyota Financial Savings Bank.

[†]Toyota Financial Services is a service mark for Toyota Motor Credit Corporation and Toyota Motor Insurance Services, Inc.

See numbered footnotes in Disclaimers section.

DISCLAIMERS

1. Toyota strives to build vehicles to match customer interest and thus they typically are built with popular options and option packages. Not all options/packages are available separately and some may not be available in all regions of the country. See toyota.com for information about options/packages commonly available in your area. If you would prefer a vehicle without any or with different options, contact your dealer to check for current availability or the possibility of placing a special order. 2. See Packages and Options section for availability, details and requirements. 3. V6 only. 4. May not be compatible with all mobile phones, MP3/WMA players and like models. 5. iPod® is a registered trademark of Apple Inc. All rights reserved. 6. Performance of BLU Logic compatible phones will vary based on phone software version, coverage, and your wireless carrier. See www.blulogicupdate.com for more details. 7. The Bluetooth® word mark and logos are registered trademarks owned by Bluetooth SIG, Inc. and any use of such marks by Toyota is under license. Other trademarks and trade names are those of their respective owners. The Bluetooth® wireless technology phones listed on toyota.com have been tested for compatibility with Toyota vehicles. Performance will vary based on phone software version, coverage and your wireless carrier. Phones are warranted by their manufacturer, not Toyota. 8. 4-cylinder only. 9. Availability and accuracy of the information provided by the navigation system or any XM services mentioned (if installed) are dependent upon many factors. Use common sense when relying on information provided. Services not available in every city or roadway. Periodic navigation updates available at additional cost. See your Navigation System Owner's Manual or contact XM for details. 10. Be sure to obey traffic regulations and maintain awareness of road and traffic conditions. Select Entune™ apps use a large amount of data and you are responsible for all data charges. Apps and services vary by phone and carrier. Not all apps and data services are available initially. Apps identified by "TM" or "@" are trademarks or registered trademarks of their respective companies and cannot be used without permission. See toyota.com/entune for the latest information regarding apps and services. 11. XM services require a subscription after trial period, and are sold separately or as a package. **Subscriptions governed by SiriusXM Customer Agreement; see www.siriusxm.com. If you decide to continue your XM service at the end of your complimentary trial, the plan you choose will automatically renew and bill at then-current rates until you call 1-866-635-2349 to cancel.** Fees and programming subject to change. Available only to those at least 18 years of age in the 48 contiguous United States and D.C. 12. HD Radio™ Technology manufactured under license from iBiquity Digital Corporation U.S. and Foreign Patents. HD Radio™ and the HD, HD Radio, and "Arc" logos are proprietary trademarks of iBiquity Digital Corp. 13. iTunes® Tagging is a registered trademark of Apple Inc. All rights reserved. 14. Feature may not be compatible with all mobile phones. Message and data rates may apply. 15. The backup camera does not provide a comprehensive view of the rear area of the vehicle. You should also look around outside your vehicle and use your mirrors to confirm rearward clearance. Cold weather will limit effectiveness and view may become cloudy. 16. The Smart Key System may interfere with some pacemakers or cardiac defibrillators. If you have one of these medical devices, please talk to your doctor to see if you should deactivate this system. 17. CAUTION! When driving a hybrid vehicle, pay special attention to the area around the vehicle. Because there is little vehicle noise in electric-only mode, pedestrians, people riding bicycles or other people and vehicles in the area may not be aware of the vehicle starting off or approaching them, so take extra care while driving. 18. HomeLink® is a registered trademark of Johnson Controls, Inc. 19. Vehicle Stability Control (VSC) is an electronic system designed to help the driver maintain vehicle control under adverse conditions. It is not a substitute for safe driving practices. Factors including speed, road conditions and driver steering input can all affect whether VSC will be effective in preventing a loss of control. Please see your Owner's Manual for further details. 20. Brake Assist is designed to help the driver take full advantage of the benefits of ABS. It is not a substitute for safe driving practices. Braking effectiveness also depends on proper brake-system maintenance and tire and road conditions. 21. Smart Stop Technology operates only in the event of certain simultaneous brake and gas pedal applications. When engaged, the system will reduce engine power to help the brakes bring the vehicle to a stop. Factors including speed, road conditions and driver input can all impact stopping distance. Smart Stop Technology is not a substitute for safe and attentive driving and does not guarantee instant stopping. Please see your Owner's Manual for further details. 22. All the airbag (AB) systems are Supplemental Restraint Systems. All ABs (if installed) are designed to inflate only under certain conditions and in certain types of severe collisions: frontal and knee ABs typically inflate in frontal collisions; side and side curtain ABs in side collisions; Roll-Sensing Curtain ABs at a severe tilt degree, roll or lateral G-force. In all other accidents, the ABs will not inflate. To decrease the risk of injury from an inflating AB, always wear seatbelts, sit upright in the middle of the seat as far back as possible and do not lean against the door. Do not put objects in front of an AB or around the seatback. Do not use a rearward-facing child seat in any front passenger seat. The force of an inflating AB may cause serious injury or death. See your Owner's Manual for further information/warnings. 23. Whiplash-Injury-Lessening front seats can help reduce the severity of whiplash injury in certain rear-end collisions. 24. The Toyota Tire Pressure Monitor alerts the driver when tire pressure is critically low. For optimal tire wear and performance, tire pressure should be checked regularly with a gauge; do not rely solely on the monitor system. See your Owner's Manual for details. 25. Available on select Toyota models. Contact with the Safety Connect® response center is dependent upon the telematics device being in operative condition, cellular connection availability, navigation map data and GPS satellite signal reception, which can limit the ability to reach the response center or receive emergency service support. Enrollment and Telematics Subscription Service Agreement required. One-year trial subscription available only with new vehicle purchase of Safety Connect®-equipped vehicles. Additional subscription terms available; charges vary by subscription term selected. 26. Do not rely exclusively on the Blind Spot Monitor to determine if a lane change is safe. Always look over your shoulder and use your turn signal before changing lanes. There are several limitations to the function, detection, range and clarity of the monitor. For a complete list of limitations and directions regarding use of the monitor, please see the Owner's Manual. 27. The engine immobilizer is a state-of-the-art anti-theft system. When you insert your key into the ignition switch, the key transmits an electronic code to the vehicle. The engine will only start if the code in the transponder chip inside the key matches the code in the vehicle's immobilizer. Because the transponder chip is embedded in the key, it can be costly to replace. If you lose a key, your Toyota dealer can help, or you can find a qualified independent locksmith to replace your key or perform high-security key services at www.aloa.org 28. In certain areas, 4-cylinder models are equipped as Partial Zero Emission Vehicles (PZEV). Equipment causes nominal reduction in horsepower (from 178 hp to 173 hp) and torque (from 170 lb.-ft. to 165 lb.-ft.). For Camry 4-cylinder models certified as Partial Zero Emission Vehicles (PZEV), all emissions components are covered for 15 years or 150,000 miles, whichever occurs first, for performance or defect. 29. Cargo and load capacity limited by weight and distribution. 30. 2012 EPA-estimated mileage. Actual mileage will vary. 31. AT-PZEV rated by the California Air Resources Board. Meets Tier-2/Bin-3 Federal emissions standard. For more information please visit www.arb.ca.gov 32. Hybrid vehicle battery expected life is 150,000 miles based on laboratory bench testing. 33. 2012 Camry preliminary mpg estimates determined by Toyota. EPA estimates not available at time of printing. Actual mileage will vary.

WARRANTIES

Every Toyota Car, Truck and SUV is built to exceptional standards. And that's not idle boasting. We back it up with these Limited Warranty Coverages:

Basic: 36 months/36,000 miles (all components other than normal wear and maintenance items).

Hybrid-Related Component Coverage: Hybrid-related components, including the HV battery, battery control module, hybrid control module and inverter with converter, are covered for 8 years/100,000 miles. The HV battery may have longer coverage under emissions warranty. Refer to applicable *Warranty and Maintenance Guide* for details.

Powertrain: 60 months/60,000 miles (engine, transmission/transaxle, drive system, seatbelts and airbags).

Rust-Through: 60 months/unlimited miles (corrosion perforation of sheet metal).

Emissions: Coverages vary under Federal and California regulations. Refer to applicable *Warranty and Maintenance Guide* for details.

Accessories: For Genuine Toyota Accessories purchased at the time of the new vehicle purchase, the Toyota Accessory Warranty coverage is in effect for 36 months/36,000 miles from the vehicle's in-service date, which is the same coverage as the Toyota New Vehicle Limited Warranty.

For Genuine Toyota Accessories purchased after the new vehicle purchase the coverage is 12 months, regardless of mileage, from the date the accessory was installed on the vehicle, or the remainder of any applicable new vehicle warranty, whichever provides greater coverage, with the exception of car covers. Car covers are warranted for 12 months from the date of purchase and do not assume any coverage under the Toyota New Vehicle Limited Warranty.

You may be eligible for transportation assistance if it's necessary that your vehicle be kept overnight for repairs covered under warranty. Please see your authorized Toyota dealership for further details.

For complete details about Toyota's warranties, please visit www.toyota.com, refer to the applicable *Warranty and Maintenance Guide* or see your Toyota dealer.

Some vehicles are shown with available equipment. Seatbelts should be worn at all times. For details on vehicle specifications, standard features and available equipment in your area, contact your Toyota dealer. A vehicle with particular equipment may not be available at the dealership. Ask your Toyota dealer to help locate a specifically equipped vehicle.

All information presented herein is based on data available at the time of printing, is subject to change without notice and pertains specifically to mainland U.S.A. vehicles only. Prototypes shown. Actual production vehicles may vary.